

North America & Canada

Softing Inc.
Knoxville, Tennessee
phone: +1.865.251.5250

Asia/Pacific

Softing Singapore Pte. Ltd.
Singapore
phone: +65-6569-6019

Softing Shanghai
Shanghai
phone: +86-21-54133123

Europe/Middle East/Africa

Germany
Softing IT Networks GmbH
Haar, Munich
phone: +49 89 45 656 660

France
Softing SRL
Creteil, Paris
phone: +33 1 45 17 28 05

Italy
Softing Italia Srl.
Cesano Boscone, Milano
phone: +39 02 4505171

For technical information and support please
contact the Softing Office in your country.

<http://itnetworks.softing.com>

optimize!
softing

Wire **X**pert

WX-4500/500
Copper Test Adapters Kit



IT Networks

Quick Start Guide
v7.2, build #424

WIREXPERT



KIT CONTENTS

- WireXpert (LOCAL & REMOTE)
- CAT6A Channel Adapters
- CAT6A Permanent Link Adapters
- USB Flash Drive
- Quick Start Guide
- Headsets
- 12V DC Power
- Carrying case
- Calibration Certificate

WIREXPERT

Item	Functionality
LOCAL & REMOTE units	Provides real-time viewing of AUTOTEST results. Device and test configurations and saving of test results can only be performed on the LOCAL unit.
Power ON/OFF Button	<p>To turn on the device, press the power button for 5 seconds.</p> <p>To turn off the device, press the power button, and select OK on the power off dialog box. Alternately, press and hold the power button for 10 seconds (not recommended). The LED in the power button turns green if the unit is turned on.</p> <p>The LED on the power button turns red when the device is charging in stand-by mode, orange if it's turned on.</p>
Speaker	Provides audible notifications when enabled.
Touch Sensitive LCD Screen	Performs test executions and viewing of results.
One-touch access buttons	Main functional buttons AUTOTEST, SETUP, DATA and TOOLS for WireXpert. Enables quick AUTOTEST and results viewing in a single click.
Stylus	Provides precise selection on LCD touch screen.
DC Input Power Supply Port	Performs charging of device when connected to power adapter shipped with WireXpert. (WX_AC_PWRAD)
R10/100 Ethernet Port	Enables communication between two sets of WireXpert for Alien Crosstalk testing.
USB Host port	<p>Enables results to be exported and firmware upgrade via USB flash drive.</p> <p>Enables loading of custom limits and labels for list based testing.</p>
USB Device Port	Enables remote connection to the PC for remote control update and exporting saved results.
Mic / Headphone Port	Enables vocal communication between Local and Remote units when connected to talk set headphones (WX_AC_TALKSET).
Hands-free Stand	Provides hands-free support on solid surfaces.

GETTING STARTED



SETUP System Settings

SETUP

Device Settings

Length Unit	FT M
Plot Y-axis Direction	↙ ↗

Device Settings

Go to System Settings > Settings 1 to set default display measurement units and Y-axis direction.

Timing Settings

Sleep Interval(minutes)
Auto Power-off Interval(minutes)

Timing Settings

Go to System Settings > Settings 1 to set or disable interval before the devices enters sleep mode or shut down.

Sound Settings

Audio Settings

Sound Settings

Go to System Settings > Settings 1 to enable or disable audio related options and volume control.

Clock & Languages

Date & Time	>
Language	English >

Localisation Settings

Go to System Settings > Settings 2 to configure date & time and language settings.

Firmware

Upgrade Firmware	7.x >
------------------	-------

Upgrading device firmware

1. Import firmware with a USB flash drive from the latest version of eXport PC software.
2. Insert USB flash drive to WireXpert units.
3. Wait for upgrade option prompt.
4. Or go to System Settings > Settings 2 > Storage > USB icon > Upgrade Firmware

Export

Test Results	>
--------------	---

Exporting and importing files

1. Insert USB flash drive to the LOCAL unit.
2. Wait for USB options prompt.
3. Or go to System Settings > Settings 2 > Storage > USB icon
4. Select Test Results to export saved results to USB flash drive.
5. Select Label List to import labels generated from eXport PC software.

Import

Custom Limits	>
Label List	>

GETTING STARTED



SETUP Project Settings

SETUP

Site Unspecified >

Site

Creates folder for AUTOTEST results to be saved into.

Operator Unspecified >

Operator

Creates display name for operator handling unit.

Label Source Simple Label >

Label Source

Creates labeling scheme for saved AUTOTEST result.

Select NONE to manually enter AUTOTEST result label when saving.

Select LIST BASED TESTING for pre-configured labels created with eXport PC software.

AutoSave

AutoSave

Enable option for WireXpert to auto save every PASS result. Option will be enabled for List Based Testing.

Next Label A1 >

Next Label

Displays label for the next AUTOTEST.

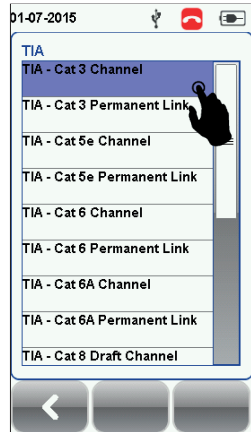
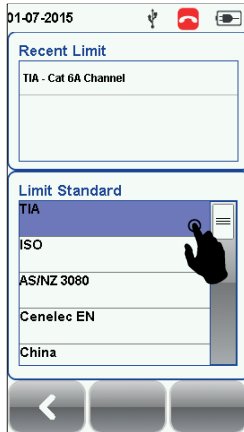
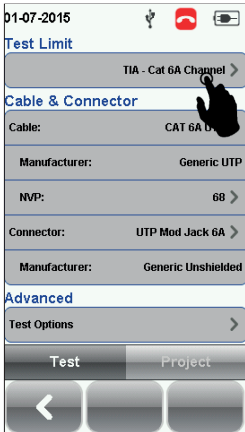
SETTING REFERENCE



SETUP
Test Settings

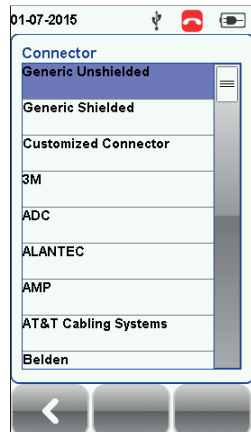
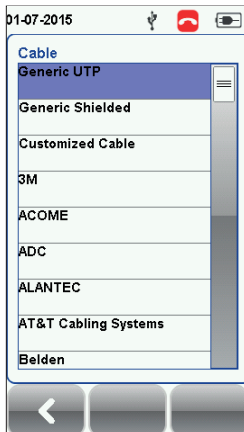
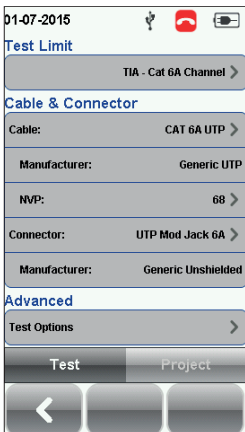
SETUP

Go to Test Settings > Test Limits to select limit Standards before performing Set Reference or AUTOTEST.



Selecting Cable and Connector Manufacturer

Go to Test Settings > Cable or Connector to specify manufacturer. Select Generic Unshielded or Generic Shielded if manufacturer is unknown.

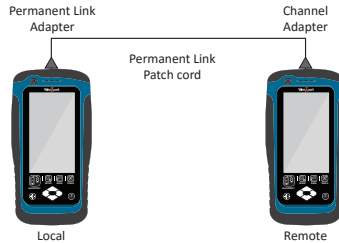


Select Customized Cable or Connector to create cable or connector with custom specifications.

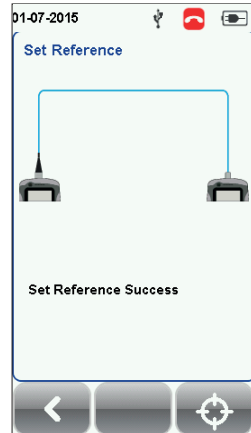
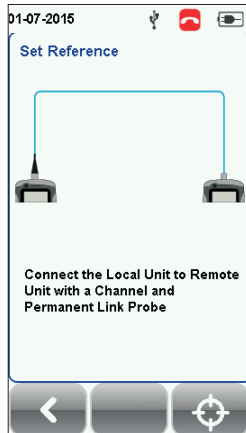
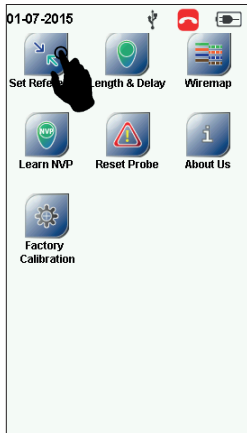
SETTING REFERENCE



TOOLS
Set Reference



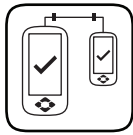
1. Connect the Permanent Link (PL) adapter to the LOCAL unit and Channel (CH) adapter to the REMOTE unit.
2. Connect the devices using the PL patch cord provided in the kit.
3. Check that the units are connected.
4. Press the TOOLS button > Set Reference to begin set reference.



Note:

It is necessary to perform a set reference measurement if the LOCAL and REMOTE units are being paired for the first time. If there is a mismatch in firmware versions or a set reference has not been performed, AUTOTEST will be denied, until these conditions are corrected. Please also verify before testing that calibrations are not expired.

PERFORMING AUTOTEST



AUTOTEST Channel & Permanent Link Test

AUTOTEST

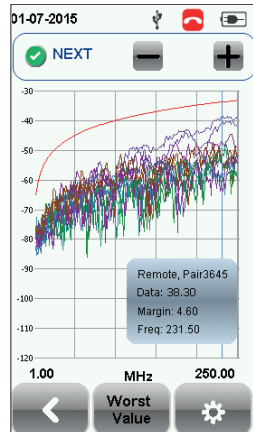
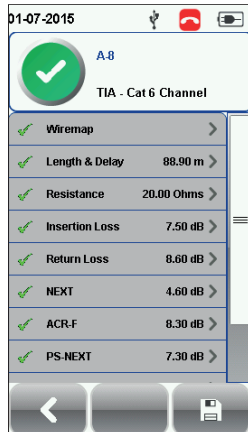
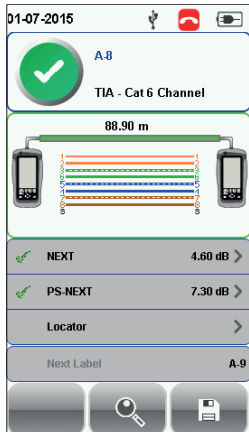


Change to two CH adapters for performing Channel or two PL adapters for performing Permanent Link test. Connect one end of cord to WireXpert and other end to link under test.

Press the AUTOTEST button to perform a certification test.

Viewing an AUTOTEST result

Summary result of the two worst values will be displayed after an AUTOTEST. Select the "View" button on AUTOTEST summary screen to view detailed results. Select parameter to view plot or detailed result.

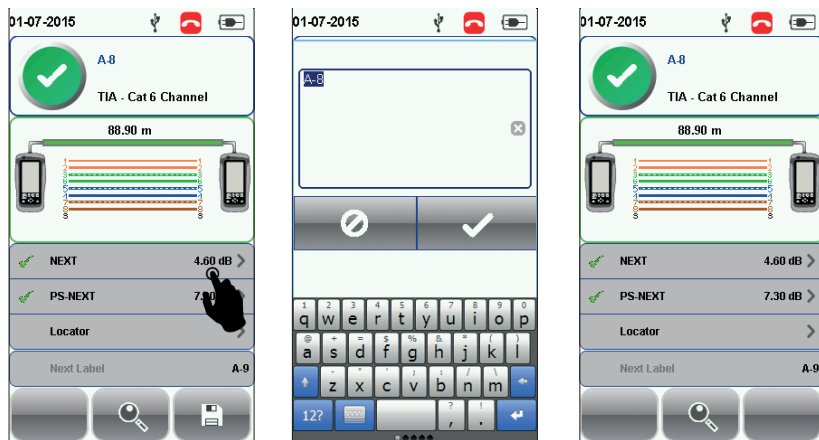


PERFORMING AUTOTEST

Saving an AUTOTEST result

Test results can be manually saved by selecting the “Save” button.

Only PASS test results will be automatically saved when Autosave is enabled or in List Based Testing mode. FAIL results must be saved manually.



Note:

- ✓ Green “PASS” – Good test result in accordance to pre-defined settings
- ✓ Green “PASS*” – “PASS” result with one or more test parameters that have margin in the range of uncertainty of the tester.
- ✗ Red “FAIL” – Unacceptable results with severe disturbance on one or more test parameters.
- ✗ Red “FAIL*” – “FAIL” result with one or more test parameters that have negative margin in the range of uncertainty of the tester.

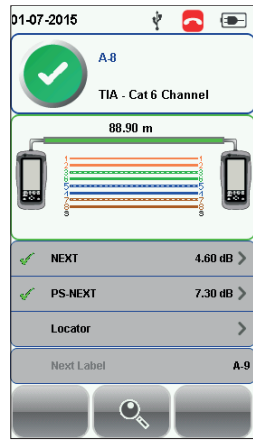
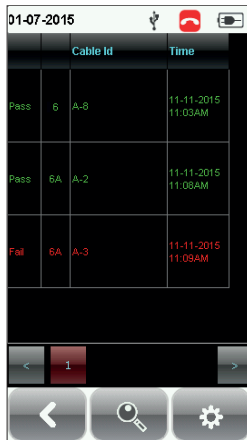
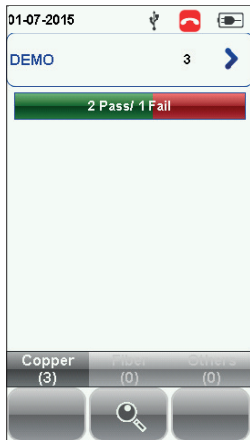
VIEWING A SAVED RESULT



DATA
Viewing Saved Results

DATA

Press the DATA button to view saved results. Select “Copper” to view saved copper test results. Fiber and MPO saved results can be viewed when respective adapters are connected to WireXpert.



MANAGING A SAVED RESULT




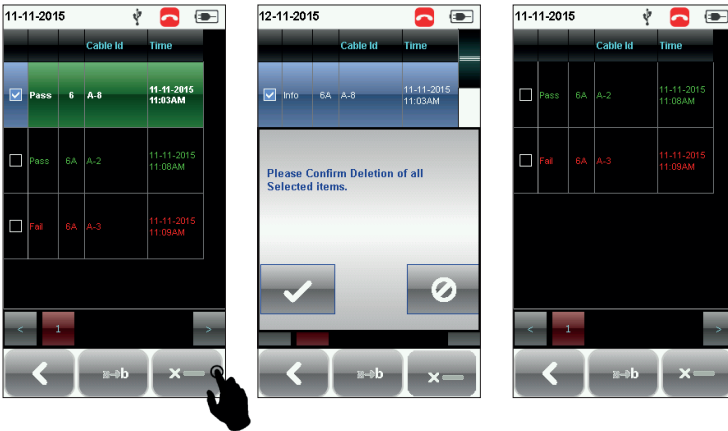
DATA

Renaming and Deleted Saved Results


DATA

Deleting a saved result

1. Press the “DATA” button.
2. Select “Copper” or “Fiber” and press the “View” button.
3. Press the “Manage” button. 
4. Select result(s) and press the “Delete” to delete result(s).



Renaming a saved result

1. Press the “DATA” button.
2. Select “Copper” or “Fiber” and press the “View” button.
3. Press the “Manage” button. 
4. Select result and press the “Rename” to rename result.



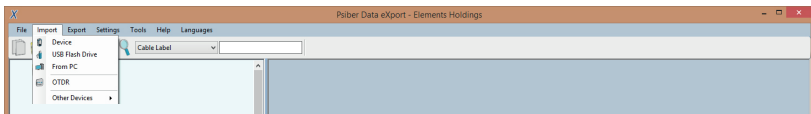
PC SOFTWARE

Using the eXport software

1. Launch eXport software.
2. Create a new project by going to File > New Project or click

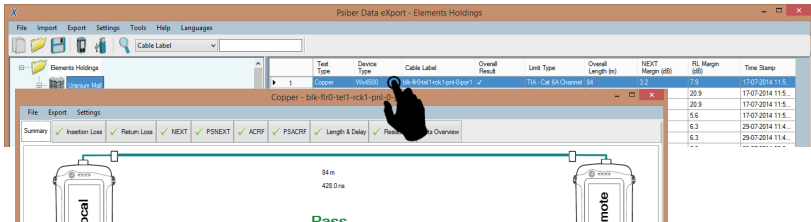


3. To import saved results, go to

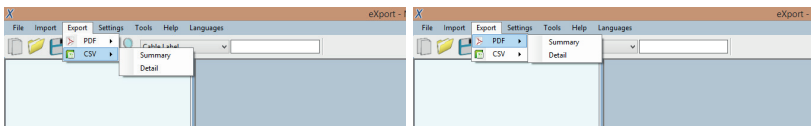


- Import > Device for direct USB connection or click
- Import > USB Flash drive for importing from USB flash drives or click
- Import > From PC for importing from local hard drives

4. To view detailed results, double click on the cable label and a new window with comprehensive results and plots will be opened.



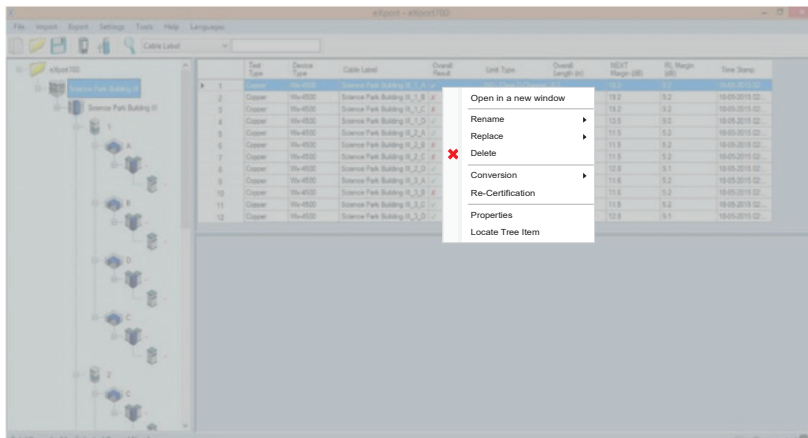
5. To export saved results, go to



- eXport > PDF to export selected test result(s) in summary or detail.
- eXport > CSV to export selected test result(s) in summary or detail.

PC SOFTWARE

Editing Information



1. To rename cable label or operator name on a single saved result, select and right click on a test result.

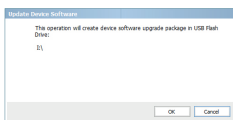
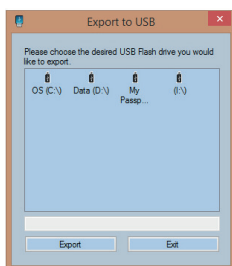
- Rename > Cable Label to rename label of the selected cable.
- Rename > Operator Name to rename the operator of the selected cable.

2. To replace cable label or operator on multiple saved results, select and right click on test results to perform operation on.

- Replace > Cable Label to replace text in labels of the selected cables.
- Replace > Operator Name to replace text in names on the selected cables.

Updating Device Software

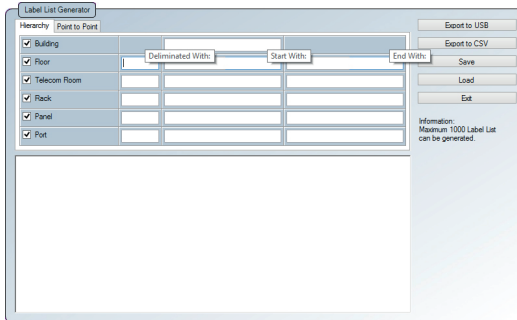
1. Insert USB drive to workstation.
2. Go to Tools > Update Device Software
3. Select USB drive and click "Export".
4. Click "OK" and wait for process to complete.



LIST BASED TESTING

LIST-BASED TESTING (LBT)

Generating hierarchical label list with eXport software



The Label List Generator generates cable labels in customizable hierarchical (building name-> floor-> telecom room-> rack-> panel-> port) order before conducting cable certifications, reducing effort from keying labels after every test. The pre-defined labels imported into the device will prevent duplicate testing when conducting in non-sequential orders.

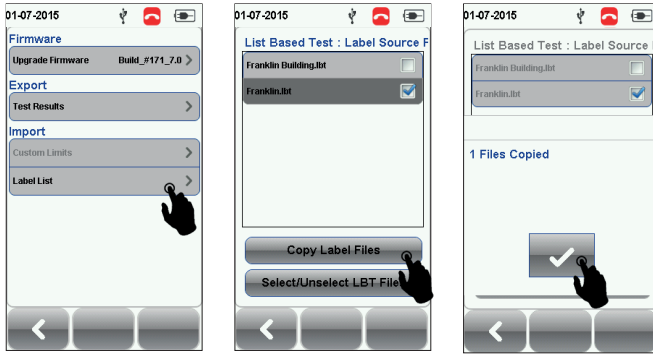
To create label list,

1. Launch eXport and go to Tools > Label List Generator.
2. Enter the first and last label of each tier into the respective fields.
3. Tiers can be disabled by unchecking if it is not applicable.
4. Click the "Save" button to save the list based labels.
5. Insert USB flash drive to PC and click the "Export to USB" to begin export.

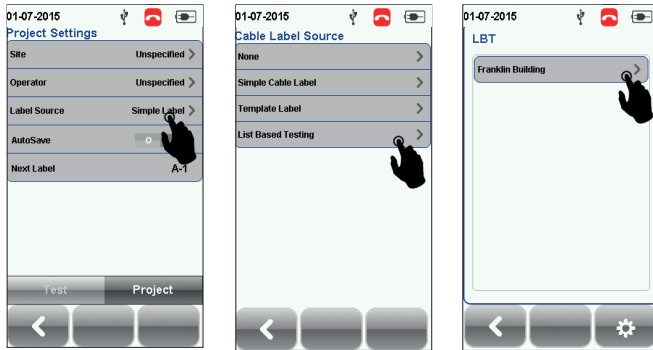
To load label list,

1. Insert USB flash drive to Local unit of WireXpert.
2. Select "Label List" and select the label list you want to import.
3. Select "Copy Label Files".

LIST BASED TESTING



4. Press the "SETUP" button > Project Settings > Label Source
5. Select "List Based Testing" and select the label that has just been imported.
6. Press the AUTOTEST button to view list and select label for test.



A **PASS** or **FAIL** result will be indicated after every test.

