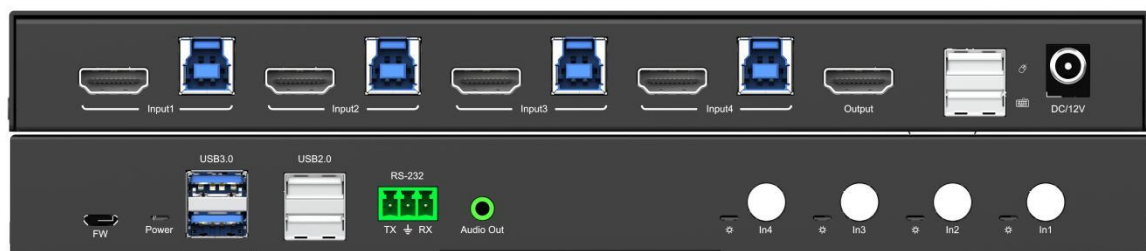


4-PORT HDMI2.0 KVM Switch

OPERATION MANUAL

The device supports switching four computer's HDMI video and USB signals to one monitor and USB signals' device. Apply to bank, transportation, education, home, conference, hotel, etc.



Dear Customer

Thank you for purchasing this product. For optimum performance and safety, please read these instructions carefully before connecting, operating or adjusting this product. Please keep this manual for future reference.

FEATURES

- HDMI 2.0, 18Gbps, resolution up to 4K@60hz 4:4:4, HDR
- 4x USB 3.0 Type B Inputs and 2x USB 3.0 Type A Outputs and USB 2.0 Type A outputs for KVM control
- Support keyboard hotkey、 device panel button and RS232 control
- Support LPCM up to 7.1/24-bit/96 kHz, Dolby Atmos and DTS-X
- Support Dolby Vision、 HDR10、 HLG
- Supports HDCP2.2 and HDCP1.4
- Support deep color up to 12 bit
- Support auto switching, power-off memory function
- Support analog audio extraction
- Operating system support WIN7/WIN10/Apple/Ubuntu,etc
- Support Micro USB for firmware updating
- With mounting ears

PACKING CONTENTS

- HDMI KVM switch
- 1 x user manual
- 12VDC Power Supply.
- Mounting ear 1 pair.

NOTICE

Our company reserves the right to make changes in the hardware, packaging and any accompanying documentation without prior written notice.

SPECIFICATIONS

Operating Temperature	0°C to +40°C (+32°F to +104°F)
Operating Humidity	5 to 90%RH (No Condensation)
HDMI input/output	5xHDMI Type A
HDMI version	HDMI 2.0
HDCP	HDCP2.2 and HDCP1.4
Resolution	1920x1200/1080P@60Hz, 12bit Deep Color 4096x2160@60Hz(4:4:4) 3840x2160@60Hz(4:4:4) VESA:2560*1600@60Hz/1920*1440@60Hz/1680*1050@60Hz
Maximum data rate	18Gbps(6Gbps per color)
Maximum pixel clock	600MHz
Colour gamut	RGB, YUV 4:4:4, 4:2:2, 4:2:0
Digital audio	LPCM up to 7.1/24-bit/96 kHz, Dolby Atmos, Dolby TrueHD, Dolby Digital Plus, Dolby Digital EX, Dolby Digital 5.1, Dolby Digital 2/0 Surround, Dolby Digital 2/0, DTS-HD Master Audio, DTS-HD, DTS ES Discrete 6.1, DTS ES Matrix 6.1, DTS Digital Surround 5.1
Analog audio	PCM 2-channel, 16/20/24 bit depths, 32/44.1/48 kHz sampling
Refresh Rate	24Hz/30Hz/50Hz/60Hz
USB Host	USB TYPE B x4
USB devices	USB Type A x6
Transmission Distance	HDMI Input :5m HDMI Output :4K/60Hz 5m 4K/30Hz and 1080P/60Hz 15m USB cable : 1.8m
Operating system	Ubuntu, Win7, Win10, Mac os, etc

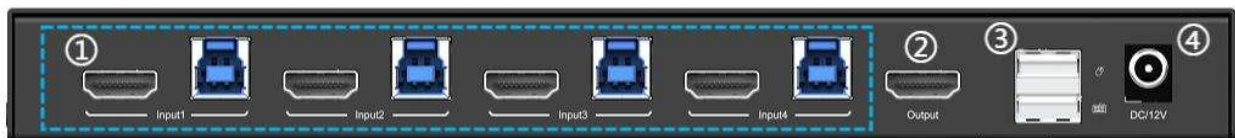
PANEL DESCRIPTIONS

Front panel



- ① Micro USB port for upgrade firmware
- ② Power light
- ③ USB 3.0 Type A ×2
- ④ USB 2.0 Type A ×2
- ⑤ RS232
- ⑥ 3.5mm analog audio
- ⑦ Signal light
- ⑧ Panel button

Rear panel

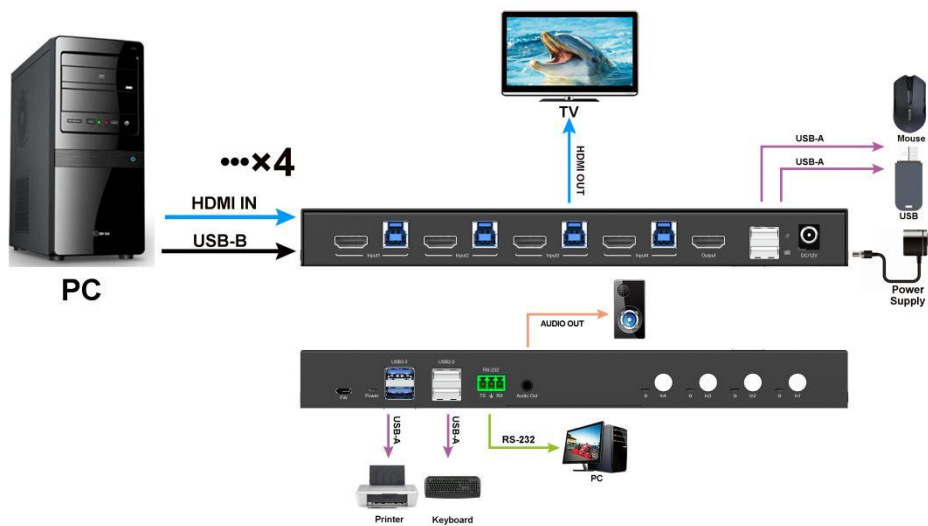


- ① 4x HDMI Type-A, 4x USB TYPE-B
- ② HDMI output
- ③ USB2.0 TYPE A ×2
- ④ DC 12V

Connecting and Operating

- (1) Connect all the PCs to the HDMI KVM switch by HDMI cable and USB A-B cable, then start all the PCs.
- (2) After all the PCs are started in step 1, then you can switch to any PC by keyboard hot key or the key pad on the KVM panel. (For example, if you want to control the PC connected to HDMI IN 2 just press the key under the PORT 2 LED indicator, or the keyboard hot key commands described following).

CONNECTION DIAGRAM



RS232 Control

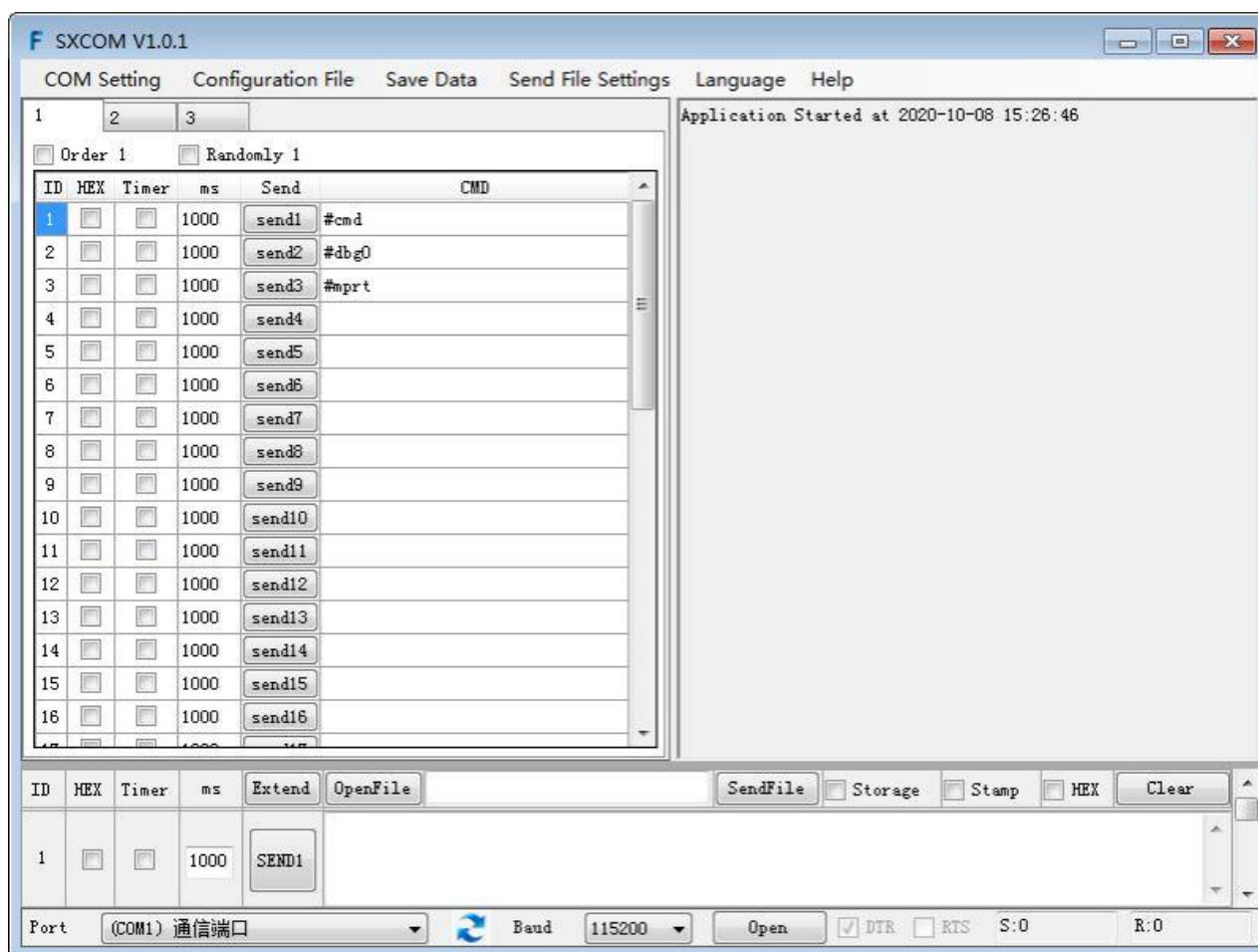
Control software operation:

The serial control software is illustrated with SXCOM as an example.

Basic Settings:



Double-click the software in the installation package to run specifically (as shown in figure) and install the RS232 software on the computer. Enter the main interface of the software, as shown in the figure below.



In the parameter configuration area, select the serial port number that the serial line connects to the PC.

Baud rate: 115200 (default)

Data location: 8

Stop bit: 1

Check bit: no

Enter Port Command in Send options.

Command list

Command	Function
#SWP:n,0	Switch to the specified video port, n=0~3 video input port
#SWP:U,0	Previous port
#SWP:D,0	Next port
#SWF:C,x	Enable/Disable auto-switch mode, x=1 Enable, x=0 Disable
#SWF:I,x	Adjust the auto-switch time, x=1 add 1s, x=0 reduce 1s
#SWF:B,x	Enable/Disable buzzer , x=1 Enable , x=0 Disable
#SWF:M,x	Enable/Disable mouse hot keys, x=1 Enable, x=0 Disable
#SWF:F,1	Factory Settings

HOW TO USE KEYBOARD HOT KEYS:

To enter Hotkey mode, press Scroll lock twice quickly, the buzzer beeps once.

Input any Hotkey combination that follows; the buzzer beeps once when input is completed.(CTRL

= Scroll Lock in the chart below, double clicking Scroll Lock also has the effect of double clicking CTRL)

Hotkey Combination	Function
1.Ctrl +Ctrl + Page Up	Previous port
2.Ctrl +Ctrl + Page Down	Next port
3.Ctrl + Ctrl +space	Automatic switching.The default switching time is 10 seconds. Adjustable switching time. And the minimum switching time is 5S.
4.Ctrl + Ctrl + +/-	Adjust the auto-switch time. +/- unit is 1S
5.Ctrl + Ctrl + F12	Enable/Disable buzzer, with power-off Memory function
6.Ctrl + Ctrl + 9	Mouse hot keys, automatic switch:Double click mouse wheel + mouse left click
7.Ctrl + Ctrl + 1~4	Select PC port directly (1-4 ports can be selected directly)
8.Ctrl + Ctrl +f+l+a+s+h+Space	Factory Settings

MAINTENANCE

Clean this unit with a soft, dry cloth. Never use alcohol, paint thinner or benzine to clean this unit.

PRODUCT SERVICE

1) **Damage requiring service:** The unit should be serviced by qualified service personnel if:

- (a) The DC power supply cord or AC adaptor has been damaged;
- (b) Objects or liquids have gotten into the unit;
- (c) The unit has been exposed to rain;
- (d) The unit does not operate normally or exhibits a marked change in performance;
- (e) The unit has been dropped or the cabinet damaged.

2) **Servicing Personnel:** Do not attempt to service the unit beyond that described in these operating instructions. Refer all other servicing to authorized servicing personnel.

3) **Replacement parts:** When parts need replacing ensure the service uses parts specified by the manufacturer or parts that have the same characteristics as the original parts. Unauthorized substitutes may result in fire, electric shock, or other hazards.

4) **Safety check:** After repairs or service, ask the service to perform safety checks to confirm that the unit is in proper working condition.

WARRANTY

If your product does not work properly because of a defect in materials or workmanship, our Company (referred to as "the warrantor") will , for the length of the period indicated as below, **(Parts(2)Year ,Labor(90) Days)** which starts with the date of original purchase ("Limited Warranty period"), at its option either(a) repair your product with new or refurbished parts, or (b) replace it with a new of a refurbished product. The decision to repair or replace will be made by the warrantor.

During the "Labor" Limited Warranty period there will be no charge for labor.

During the "Parts" warranty period, there will be no charge for parts. You must mail-in your product during the warranty period. This Limited Warranty is extended only to the original purchaser and only covers product purchased as new. A purchase receipt or other proof of original purchase date is required for Limited Warranty service.

The logo for DIREKTRONIK is displayed in a bold, italicized, sans-serif font. The letters are white with a thick red outline, set against a yellow background that forms a large, curved shape at the bottom of the page.

Direktronik AB tel. 08-52 400 700 www.direktronik.se